



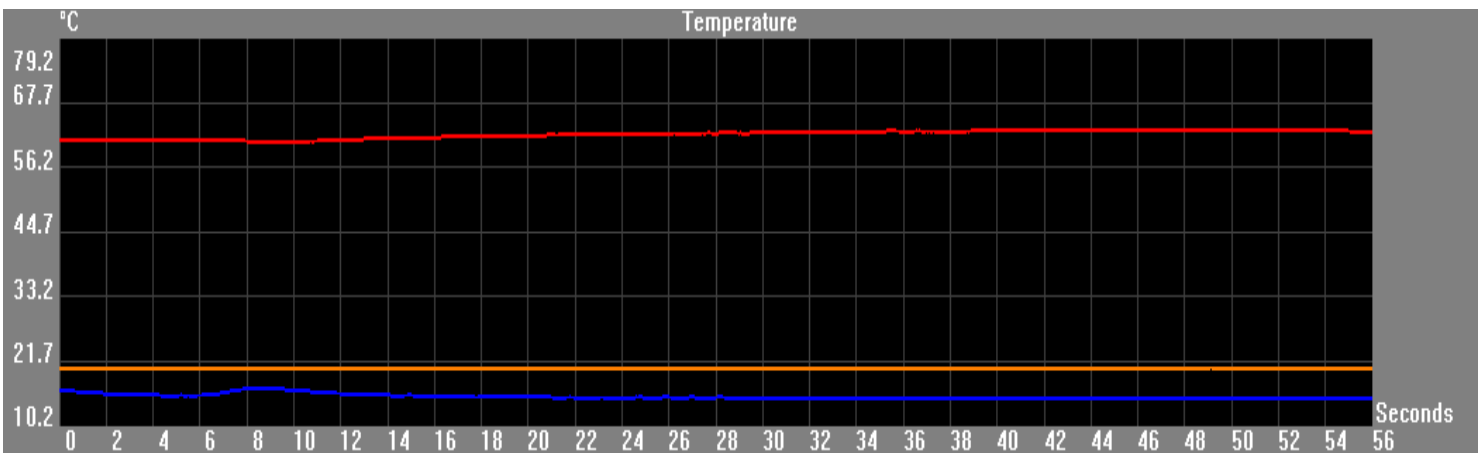
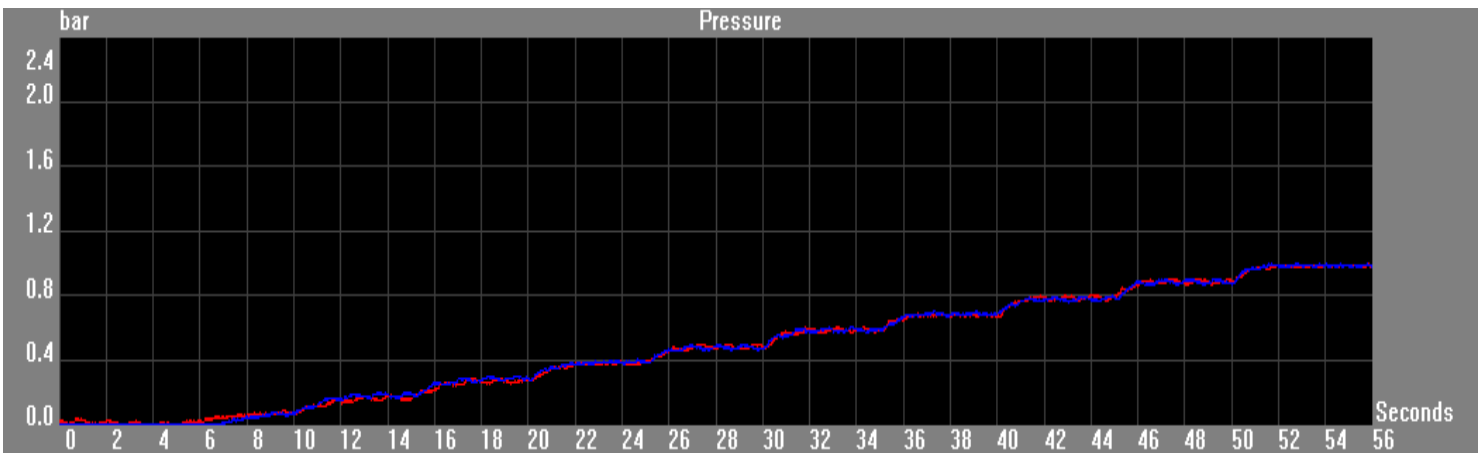
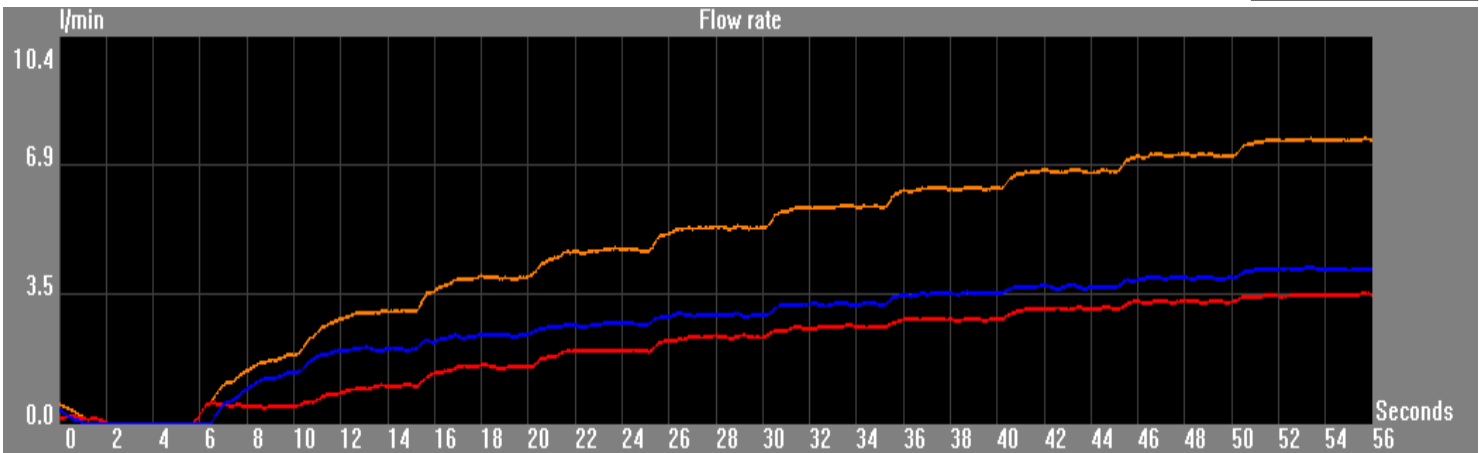
# STEP FLOW RATE REPORT

Crosswater Holdings Ltd - Lake View House, Dartford DA1 5FU

## Component data

Client :	WO110DNC	Model :	A
Category :	A	Serial number :	A
Line :	A	Test description :	LOW FLOW RATE

Station 1



Start date :	10/03/2017 - 10:07	Operator :	Peter Memmott
Test duration :	56 (Seconds)	Signature :	_____



# STEP FLOW RATE REPORT

Pag. 2/2

Crosswater Holdings Ltd - Lake View House, Dartford DA1 5FU

## Component data

Client :	WO110DNC	Model :	A
Category :	A	Serial number :	A
Line :	A	Test description :	LOW FLOW RATE

## Test settings:

upto 1bar flow rates

**Station 1**

Starting pressure:	0.00 bar	<input checked="" type="checkbox"/> Open hot
Step:	0.10 bar	<input type="checkbox"/> Open by-pass
Stabilisation time:	5 "	<input checked="" type="checkbox"/> Open cold
Steps number:	11	

Pitch	Hot pressure (bar)	Cold pressure (bar)	Hot flow rate (l/min)	Cold flow rate (l/min)	Mixed flow rate (l/min)	Mixed temperature (°C)
1	0.00	0.00	0.00	0.00	0.00	20.55
2	0.08	0.08	0.48	1.39	1.86	20.55
3	0.16	0.20	1.05	2.00	3.05	20.49
4	0.28	0.29	1.53	2.40	3.93	20.50
5	0.39	0.39	1.97	2.68	4.64	20.51
6	0.49	0.47	2.32	2.94	5.26	20.61
7	0.58	0.59	2.62	3.20	5.82	20.56
8	0.68	0.69	2.83	3.52	6.35	20.56
9	0.80	0.80	3.11	3.68	6.79	20.52
10	0.90	0.88	3.27	3.93	7.20	20.55
11	0.99	0.99	3.47	4.12	7.59	20.56

Notes:

Start date : 10/03/2017 - 10:07

Operator : Peter Memmott

Test duration : 56 (Seconds)

Signature : \_\_\_\_\_